

Scan up to A2 / C-size originals of any size
- scan documents up to A1 / D-size

TAVCO

Authorized Dealer www.tavco.net

Ideal for **Fragile Documents**, photos, newspapers, Historical Documents and other objects.
Easy-to-use **Book and Oversize** Scanning wizards



More details

The all new IQ FLEX takes an innovative approach to wide format flatbed scanning, focusing on you and how you work, while also pushing the boundaries of scanning technology.

More features

Easy to use yet incredibly flexible with options for over-size documents, scan to print and book scanning with page split and spine fold elimination.

The scanner comes complete with a built-in controller and touchscreen the size of a tablet PC. This enables you to operate, edit, annotate and mark-up right from the screen with no need for an extra PC.

HP / Canon / EPSON

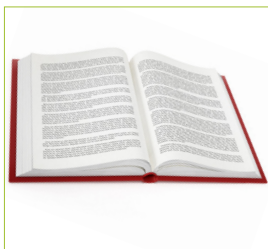
Integrated

More possibilities

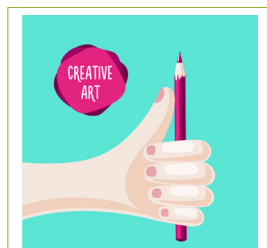
Protect fragile originals by placing them gently on the scanner bed or utilize the flexibility to scan books, textiles and/or artwork you would like to transform into digital content.

More quality

Operate from the touch panel or install the Nextimage software and run it from a PC or simply use rainforest365. Scan to any PC via Ethernet or Wi-Fi with the revolutionary Contex LINK pc utility.



Ideal for book scanning - 2 pages in one scanning



Scan your large fragile documents, textiles or artwork



Control the entire scan process from the IQ FLEX built-in touchscreen computer



Only WIFI enabled large format scanner. Speed up to 150Mb/sec.

Scan sizes	
Maximum standard sheet size	Arch C-size (18" x 24") / ISO A2 (457 x 610 mm)
Maximum image area	19.2" x 25.2" (487mm x 639.6mm)
Oversize scanning (2-stage scanning)	Arch D-size (24" x 36") / ISO A1 (610 x 914 mm)
Color Scanning speed	
RGB Color or Grayscale/ Monochrome at 200dpi, full image area scan ¹	6 seconds
Capture Technology	
Optical resolution	1200 x 1200 dpi
Maximum Resolution	9600 dpi
Sensor Technology	CIS Contex CleanScan+
Maximum Media Thickness	Limited only by capacity
Accuracy	0.1% +/- 1 pixel
Data Capture (color/mono)	48-bit / 16-bit
Color Space ²	Adobe RGB / Device RGB / RAW RGB / sRGB
Effective number of Pixels	23017 pixels (w) x 30217 pixels (l)
Capacities	
Document weight	Up to 10kg (22lbs) evenly distributed over the whole scan glass area
Document thickness	No specified limit but objects must maintain contact with the glass, completely cover the glass or be effectively covered by the scanner lid and not exceed the maximum document weight (see above)
Connectivity³	
Supported OS	Windows 10, 8, 7 and Vista
File formats	PDF, PDF/A, TIF and JPG
Cloud Destinations	Dropbox, Google Drive, Microsoft OneDrive, Box.com, rainforest365 ready
Network	Wireless (IEEE 802.11b, IEEE 802.11g, IEEE 802.11n) up to 150Mbps / Gigabit Ethernet
Included software (download)	Contex LINK networking and cloud access utility WIDESystem driver and scanner maintenance utility
Optional software ⁴	Nextimage5, AutoCAD®, Microstation™, ArcGIS™ and all other CAD, GIS and 64-bit TWAIN application driver included for use with EDM and other imaging software
Nextimage ⁵ additional file formats	TIF, JPG, PDF, PDF/A, DWF, CALS, BMP, JPEG-2000(JP2), JPEG2000 Extended(JPX), TIF-G3, TIF-G4, multi-page PDF and others
Embedded Controller	
Touch Screen	7" Multi Touch Screen, 800 x 480 pixels
Processor	Atom Quad-Core
Memory (ram/flash)	8GB / 16 GB
Destinations	Network PCs, Cloud, Email, Copy and USB key (USB3.0)
File formats	PDF, PDF/A, TIF and JPG
Supported printers	Selected HP, Canon and EPSON wide format printers. See full list at Contex.com
Power, weight and dimensions	
Power Consumption (Ready / Sleep Mode / Scanning)	Max 10W / 0.5W / 23W – ENERGY STAR certified
Power Requirements	100 – 240V, 60/50Hz, 80W
Unpacked Weight / Dimensions (L x W x H5)	35 kg (77lbs) / 661 mm (26") x 1176 mm (46") x 194 mm (8")
Packed Weight / Dimensions (L x W x H)	43 kg (95lbs) / 838 mm (33") x 1320 mm (52") x 305 mm (12")
Packaging	EPE foam shock protection frame inside thick cardboard box
Certifications and Warranty	
Operating Maximum Ambient Temperature	This product has been submitted and evaluated for use at the maximum ambient temperature specification of 40 degrees C
Certifications/compliance	RoHS, cUL, CE, Customs Union, CCC, VCCI, KC, BSMI, Ukr, ENERGY STAR certified
Safety	IEC 60950. Certificates: cUL (USA and Canada), CE (Europe), CCC (China), PSE (Japan), EAC (Russia, Kazakhstan, Belarus), KC (Korea), BSMI (Taiwan), Ukr (Ukraine) and BIS (India)
Electro Magnetic Compatibility (EMC)	Compliant with Class A requirements, including FCC rules (USA), ICES (Canada), EMC Directive (EU), CCC (China), VCCI (Japan), EAC (Russia, Kazakhstan, Belarus), KC (Korea), BSMI (Taiwan), Ukr (Ukraine) and BIS (India)
Environmental	ENERGY STAR® Certified, EuP (EU), WEEE (EU), RoHS (EU) and REACH (EU)
Country of Origin	Designed in Denmark, Manufactured in China
Warranty	2-year warranty. Fast, easy parts replacement
What's in the box	Scanner, 2m Ethernet cable, Wi-Fi USB dongle, external power supply, quick guide: installation, quick guide: scanner cleaning and calibration, calibration sheet and cleaning cloth

1. Average speed at 200dpi. Scanning speeds depend on scan destination, dpi and network configuration. Contex recommends Intel Core Duo, Core 2 Duo, or better processors, 2GB RAM. Speed tests performed using Nextimage software, PC with Intel Core i5-2500 Quad processor, 8GB RAM, 7200rpm HDD, Windows 7 64-bit Ultimate.
 2. Color spaces: sRGB with embedded controller, other color spaces available using Nextimage software.
 3. Contex LINK software operational specifications
 4. Contex applications create industry standard raster file formats that can be used in any CAD or GIS application.
 5. Scanner lid in lowered position with touch screen raised.
 All trademarks remain the property of their respective holders, and are used only to directly describe the product being provided. Their use in no way indicates any relationship between Contex and the holders of the said trademarks.

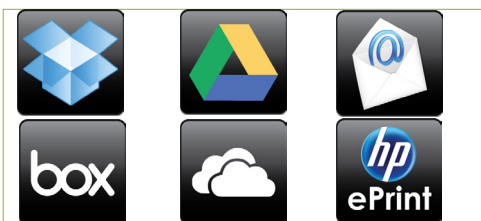
Contex Head Office
 Phone: +45 4814 1122
 info@contex.com

Contex Americas
 Virginia, USA
 Phone: +1 (703) 964 9850
 salesamericas@contex.com

Contex EMEA & India
 Copenhagen, Denmark
 Phone: +45 4814 1122
 emea-india@contex.com

Contex Singapore
 ap@contex.com

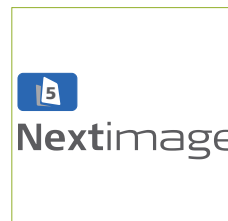
Contex Japan
 Yokohama
 Phone: +81 3 3669 5515
 info-japan@contex.com



Send documents directly to your preferred cloud destinations
 More at contex.com



rainforest365 ready - Securely scan and share in one step



Made for the Contex Award
 Winning software for scanning,
 copying and printing



Contex IQ
 "A" Grade



X-Rite i1Profiles
 for professional
 color results

